

DID YOU KNOW?

about our...



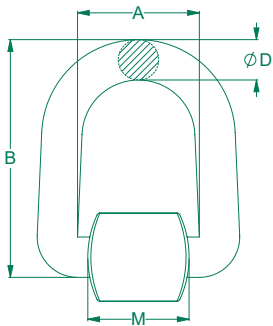
**NEW
PRODUCT**

Lifting Point D Ring Long

Weld on lift points add permanent anchor points onto spreader beams or heavy equipment.

LIFTING POINT D RING LONG GRADE 80 / POWDER COAT / HEC

| Part | Qfind | WLL (Tonne) | Dimensions (mm) | | | | Pack Qty |
|-------------|---------|----------------|-----------------|------|-----|----|-------------|
| | | | A | B | Ø D | M | |
| ULLW08PDS01 | LW08DS1 | 1 | 55 | 95.7 | 14 | 50 | 10 |
| ULLW08PDS03 | LW08DS3 | 3 | 64 | 99.0 | 17 | 58 | 10 |



FEATURES

- Can be welded onto any carbon steel surface
- Lifting Point
- Fixed anchor point for spreader beam attachment
- Anchor point for load restraint
- Weldable strap with WLL mark



WLL markings on
D ring and strap

MARKINGS:

- **CE**
(European Conformity)
- **WLL**
(Working Load Limit)
- **Trace Code**
(Linked to certificate online)
- **Manufacturer's mark**
- **Size**



You can download this
Test Certificate and/or
Report from our website:

hobson.com.au

Disclaimer: While every reasonable effort has been made to ensure that this document is correct at the time of printing, Hobson Engineering®, its agencies and employees, disclaim any and all liability to any person in respect of anything or the consequences of anything done or omitted to be done in reliance upon the whole or any part of this document.

Bolt Tension | Anti-Vibration | Product Reliability | Traceability

hobson.com.au **QUALITY FASTENERS SINCE 1935**



202202101DYK